

# EZ-OFFICE SOFTWARE

## RECORD KEEPING AND REPORTING TOOL FOR GROWERS



### INTRODUCING THE NEW EZ-OFFICE SOFTWARE

EZ-Office™ software is a desktop software application targeting growers who want farm management record keeping and reporting that seamlessly links records and data collection to Trimble guidance displays.

EZ-Office lets you import and export data with the Trimble® EZ-Guide® 250, EZ-Guide 500 and AgGPS® FieldManager™ displays. Now you can store field management records, farm inputs, equipment and operators as well as manage guidance lines and vehicle guidance settings. EZ-Office can be upgraded to use the AgriDNA (Agricultural Digital Naming Attributes) up-to-date reference database service that spans chemicals, seed varieties, fertilizer and other production practice types.

EZ-Office is a product within the Trimble Connected Farm™ suite of information management solutions optimizing connectivity of in-cab systems and information management between the field and office.

Keep track of operator, staff and input records

Easy to search field records within a client, farm, field, job, crop heirarchy to match Trimble displays

Graphical map window displays field coverage map and as-applied maps as proof of the job performed

Area	Start/End	Area
Above 157.25		0.14 ha
126.24 - 157.25		0.89 ha
122.27 - 126.25		0.98 ha
114.79 - 122.26		26.20 ha
87.32 - 114.78		1.29 ha
63.04 - 87.31		0.65 ha
Below 63.04		0.75 ha

### EZ-OFFICE FEATURES & BENEFITS INCLUDE:

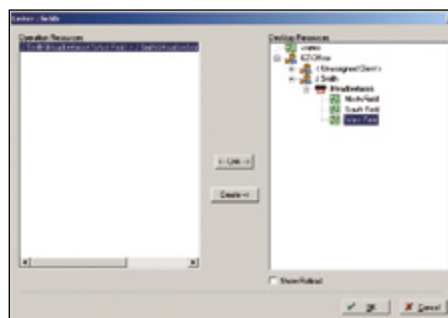
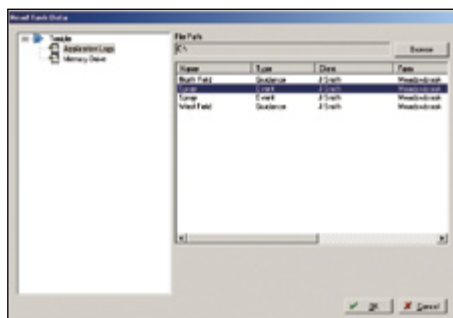
- Save time with seamless data transfer between field and office
- Select standard attributes for easier field record keeping
- Display as-applied maps precisely locating variable management
- Store and manage guidance lines for controlled traffic strategies
- Store and restore vehicle configurations for EZ-Steer® and Autopilot™
- Generate application reports and job summaries to keep you on track



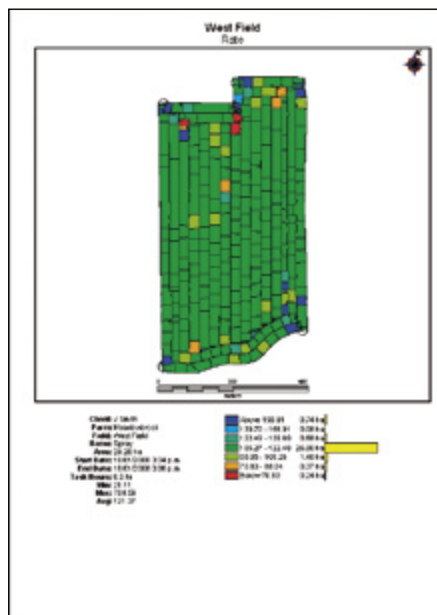
Trimble Agriculture. The line everyone follows.

# EZ-OFFICE SOFTWARE

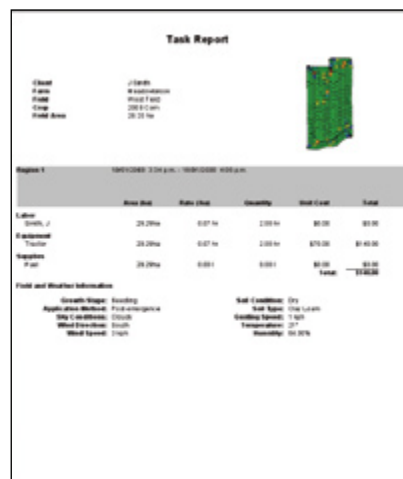
## RECORD KEEPING AND REPORTING TOOL FOR GROWERS



- Select the data you wish to transfer from AgGPS data directory or the data drive
- Simply import all data from the field and have field records automatically created or link field data to existing fields already defined in EZ-Office



- View and print a large application coverage map, the as-applied rate map, the as-planted variety map
- View and print the guidance lines or patterns and field boundaries
- View and print a topographic map layer



- Generate and print a task report showing the summary of the job performed in the field including a coverage map plus farm records including date, time, operator name, chemical applied, rates applied and weather conditions.